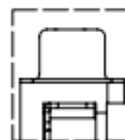


WITH SCREW TYPE



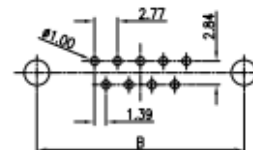
WITH RIVET TYPE



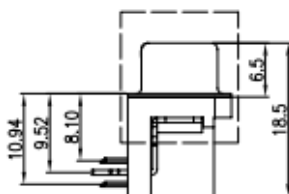
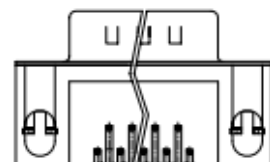
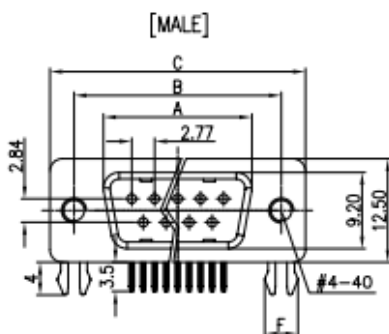
SCREWS



WITH SCREW AND RIVET TYPE



RECOMMEND PCB LAYOUT(TOLERANCE  $\pm 0.05$ )  
(VIEW FROM TOP SIDE)



NOTES:

1. PRODUCTS PERFORMANCE:
  - 1.0 VOLTAGE RATING: 250V AC.
  - 1.1 CONTACT CURRENT RATING: 1.5A MAX. PER PIN.
  - 1.2 CONTACT RESISTANCE: 20mΩ MAX.
  - 1.3 DIELECTRIC WITHSTANDING VOLTAGE: 500V AC(rms) FOR 1 MINUTE.
  - 1.4 INSULATION RESISTANCE: 1000MΩ MINI.
  - 1.5 OPERATING TEMPERATURE: -20°C~+70°C.

2. PRODUCT NUMBER CODE:

DS1037 - X X X X X X X X

- SCREW DIM. E
  - 4: 4.80mm
  - 5: 5.80mm
- BOARD LOCK DIM. F
  - 4: 4.00mm
  - 7: 3.70mm
- CONTACT PLATING
  - T: SELECTIVE GOLD FLASH
  - Si: FULL GOLD FLASH
- COLOR OF HOUSING
  - K: BLACK
  - B: BLUE
- SCREW TYPE
  - A: WITH SCREW TYPE
  - B: WITH RIVET TYPE
  - C: WITH SCREW AND RIVET TYPE
  - D: RIVET TYPE WITH SCREWS IN BULK PACKAGE
- SHELL PLATING
  - N: Nickel
  - T: Tin
- CONNECTOR TYPE
  - M: MALE
  - F: FEMALE
- No. OF CONTACT
  - 09: 9pos.
  - 15: 15pos.
  - 25: 25pos.
  - 37: 37pos.

Dimension

Position	A $\pm 0.2$	B $\pm 0.2$	C $\pm 0.2$	D
9	17.90	24.99	30.84	16.33
15	26.50	33.32	39.14	24.66
25	40.00	47.04	53.04	38.38
37	56.50	63.50	69.32	54.84

GENERAL TOLERANCE		ANGLE TOLERANCE		PROJECTION	TITLE
X.	$\pm 0.60$	X.	$\pm 5'$		D-SUB RIGHT ANGLE(7.2mm) TYPE
.X	$\pm 0.38$	.X	$\pm 3'$	mm	
.XX	$\pm 0.25$	.XX	$\pm 2'$	SHEET SIZE	A4
DRAWING TYPE		CUSTOMER		SERIES	DS1037 SERIES
SCALE		1:1	SHEET	1 OF 1	
DRB-09FA		DRB-09MA		DRB-15FA	
DRB-15FA		DRB-15MA		DRB-25FA	
DRB-25FA		DRB-25MA		DRB-37FA	
DRB-37FA		DRB-37MA			