

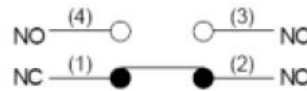
KZ-8 Limit Switch



Features

Double circuit type of limit switch Highly rigid construction, consists of intensive plastic and aluminum cast (Head and cover snugly fit in box)
 Small volume, water-proof and oil-proof construction Built-in basic switch with double spring mechanism, longer mechanical life Smooth operation with greater OT Easy-to-wire circuit opening design Wide variety of actuators, easily use

Contact Form



Characteristics

Ratings

Rated voltage	Noninductive Load (A)				Inductive Load (A)			
	Resistance Load		Lamp Load		Inductive Load		Motor Load	
	NC	NO	NC	NO	NC	NO	NC	NO
125VAC C 250VAC C 500VAC C	5.5	5.5	1.5	0.7	3.3	3.3	2	1
8VDC 14VDC 30VDC 125VDC C 250VDC C	5.5	5.5	3.3	3.3	5.4	4.4	3.3	3.3
Inrush Current	N.C: below 24A, N.O: below 12A							

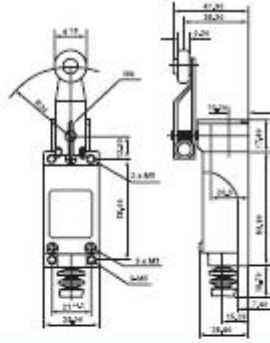
Operation speed	0.5mm-50cm/sec
Operating frequency Contact resistance	Mechanical: 120 operations/minute Electrical: 30 operations/minute 25m max. (initial value)
Insulation resistance	100m min. at 500VDC
Dielectric strength	1500VAC, 50/60 HZ for 1 minute between terminals of the same polarity 1500VAC, 50/60 HZ for 1 minute between current-carrying and non-current-carrying metal parts
Vibration	10-55HZ, 1.5mm double amplitude
Shock	Mechanical durable: 1,000m/Sec ² (about 100G'S) Malfunction: 300m/Sec ² (about 30G'S)
Ambient temperature	-5 to +65
Humidity	<95% RH
Life	Mechanical: 10,000,000 operations above Electrical: 500,000 operations above
Weight	About 130 to 190g
Degree of protection	IP65

Operating characteristics

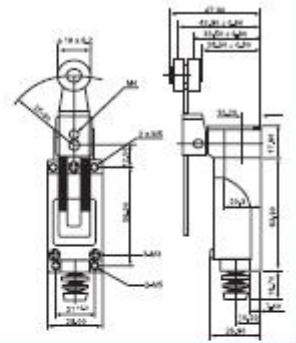
Models	KZ-8104	KZ-8108	KZ-8107	KZ-8111	KZ-8112/8122	KZ-8166/8167/8168/8169
OF Max.	750g	750g	750g	900g	900g	150g
RF Min.	100g	100g	100g	150g	150g	-
PT Max.	20	20	20	1.5mm	1.5mm	30mm
OT Min.	50	50	50	4mm	4mm	-
MD Max.	12	12	12	1mm	1mm	-
OP	-	-	-	26 0.8mm	37 0.8mm	-

Appearance and dimension

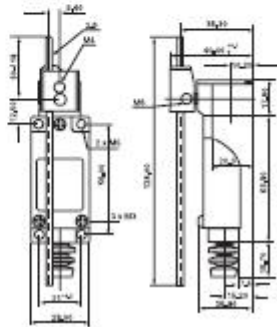
KZ-8104



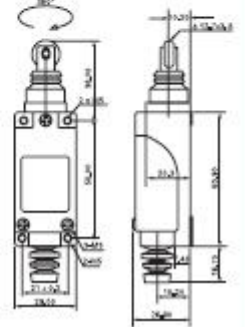
KZ-8108



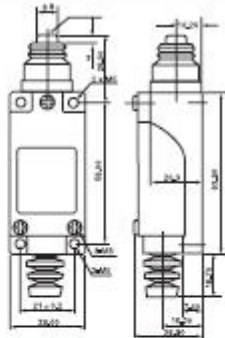
KZ-8107



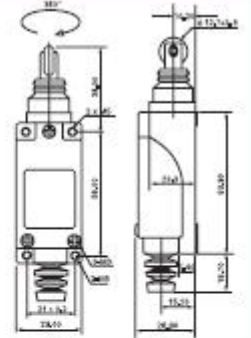
KZ-8112



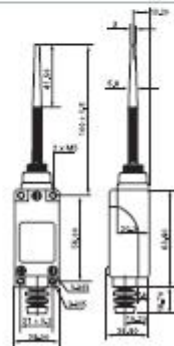
KZ-8111



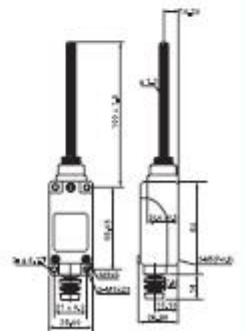
KZ-8122



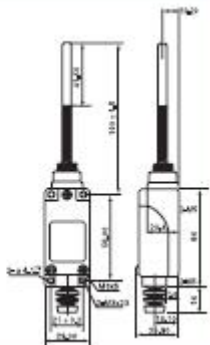
KZ-8166



KZ-8167



KZ-8168



KZ-8169

